

# Gemini Networking



Eduardo Toro R.  
AURA/Gemini Observatory in Chile

# The Gemini Observatory Mission

“To advance our knowledge of the Universe by providing the International Gemini community with forefront access to the entire sky”

# Gemini Observatory

## “ One Observatory, Two Telescopes ”

### Gemini Telescopes

- Gemini North
  - Mauna Kea Mountain, Hawaii
- Gemini South
  - Cerro Pachon, Chile

### Gemini Partners

- United States
- Canada
- Chile
- Brazil
- Argentina
- Korea



**NRC · CNRC**



Ministerio de  
Ciencia, Tecnología  
e Innovación Productiva  
Presidencia de la Nación



# Gemini Observatory

## Data Centers

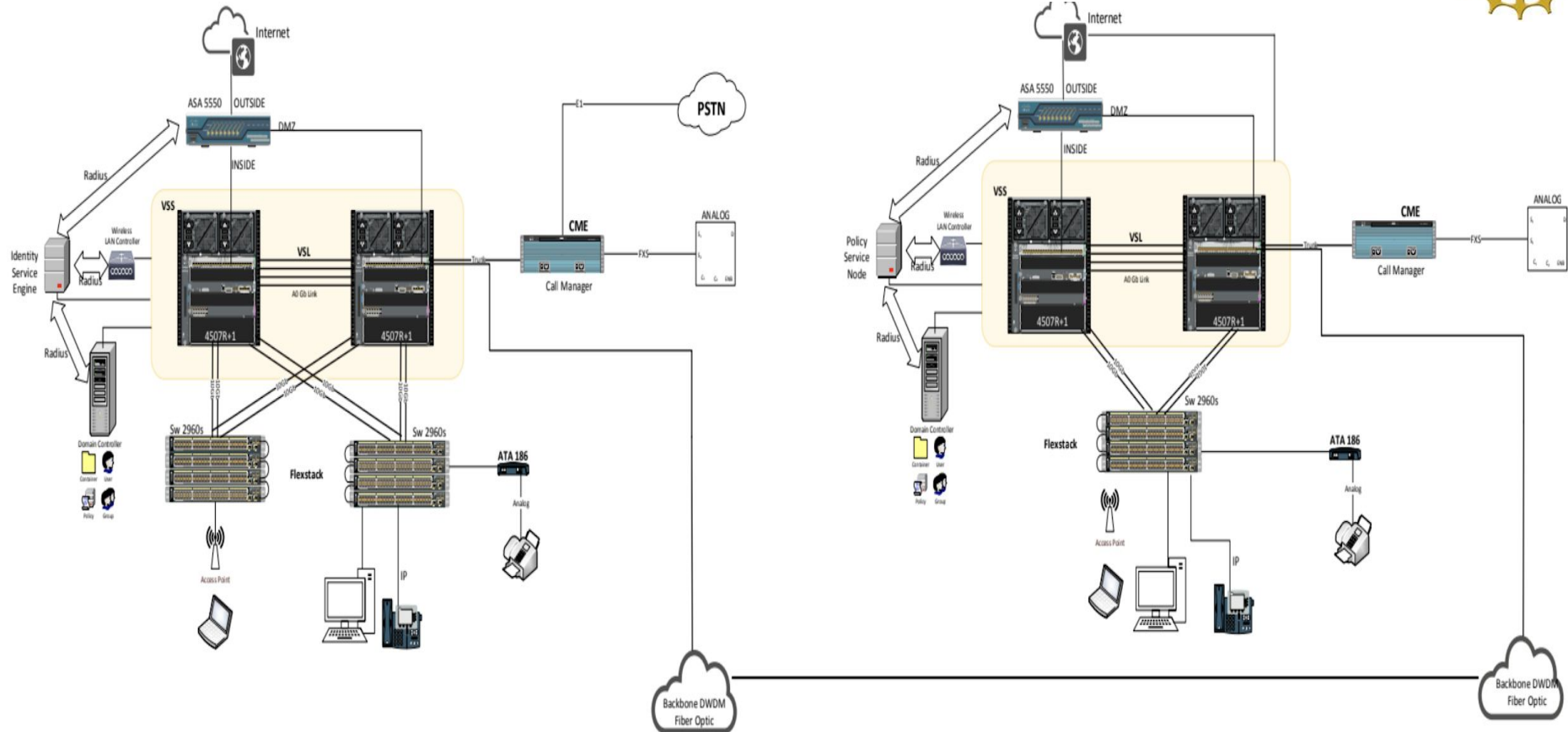
### Gemini North

- Hilo Base Facility (HBF) , Hilo City
- Mauna Kea Operations (MKO), at 4200m

### Gemini South

- La Serena Base Facility (SBF), La Serena
- Cerro Pachon Operation (CPO), at 2700m

# High level Diagram



# Key Use Cases:

- #1 = Base Facility Operations: High QoS
- #2 = Summit Base Data Transfer: High Bandwidth
- #3 = High Availability: Multiple Paths
- #4 = Cross-site Coordination, Hilo - La Serena: Low Latency
- #5 = Cloud Data Archiving: High Reliability



# Gemini Network Use

- Remote Observing
  - Base Facility Operations
- Instrumentation
  - Each Telescope is equipped with four instruments fed by advanced AO Systems:
    - GMOS
    - GSAOI
    - GPI
    - FLAMINGOS-2
    - GEMS
    - GCAL
  - Visiting Instruments
    - DSSI
    - Phoenix
    - IGRINS



Gemini South staff Javier Fuentes and Joy Chavez conduct remote observations from the control room in La Serena, Chile.

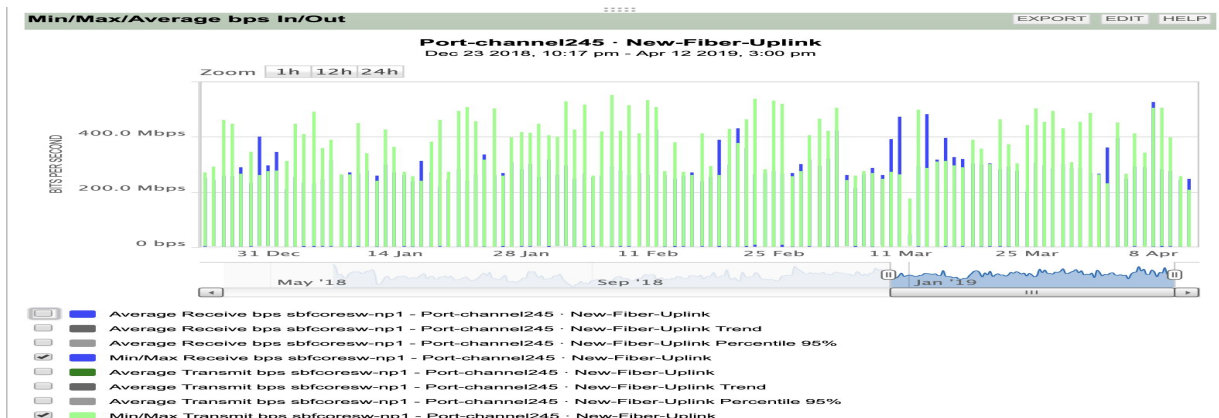
# Summit Base Data Transfer

## Primary Channel

- Current : SM Fiber DWDM, 20 Gb/s  
: Port-Channel 2x10Gb/s
- Future: Upgrade: 40 Gb/s

## Backup link

- Gemini/Telconor Link : 300  
Mb/s (2 Microwave radios)





# Multiple Paths: HA

## Data Center Redundancy:

- Core Switches
- Authentication Servers
- Virtualization nodes
- Storage servers
- Power and Cooling Systems

## Fiber Optic

- Port-Channel

## Microwave Link

- Two Radios 150 Mb/s
  - Gemini/Telconor

# Cross Site Coordination

VPN L2L between :

- SBF and HBF
- SBF and MKO
- CPO and HBF
- CPO and MKO

Low Latency ~220 ms

La Serena <=> Hilo

Many Services in  
common:

- Mail and Google Apps
- ISE
- Active Directory
- DNS
- Zoom Conference

# Cloud Data Archiving

- Fast and low cost Observatory data archive running on the cloud
- <https://archive.gemini.edu/>

# Next Important upgrades 2019

- Upgrade to the Next Generation Firewalls
  - Migrating from old EoL equipment in 4 locations
  - Increase BW to the AURA Border router
  - Improvement using High availability
  - New features incorporated :
    - New IPS
    - AMP
    - URL Filtering

# Gemini and NCOA

Gemini IT is planning to leverage the benefits that NCOA can provide, to deliver efficient and effective IT throughout the organization.

- Knowledge transfer across Programs
- Increased support capacity
- Economies of scale
- Standardization of infrastructure

# Thanks

